

**555 North Research Place**  
*Central Islip, NY*

**GREINER-MALTZ**  
REAL ESTATE

**+/- 40,000 sf Available for Lease**

**EXCLUSIVE**



***Property Details:***

- +/- 40,000 Sq. Ft.
- 24' – 26' Ceiling Height
- 3 Docks & 1 Drive-in Door
- BTS Small Office
- Gas Heat
- Connected to Sewers

***For Further Information And Inspection,  
Please Contact:***

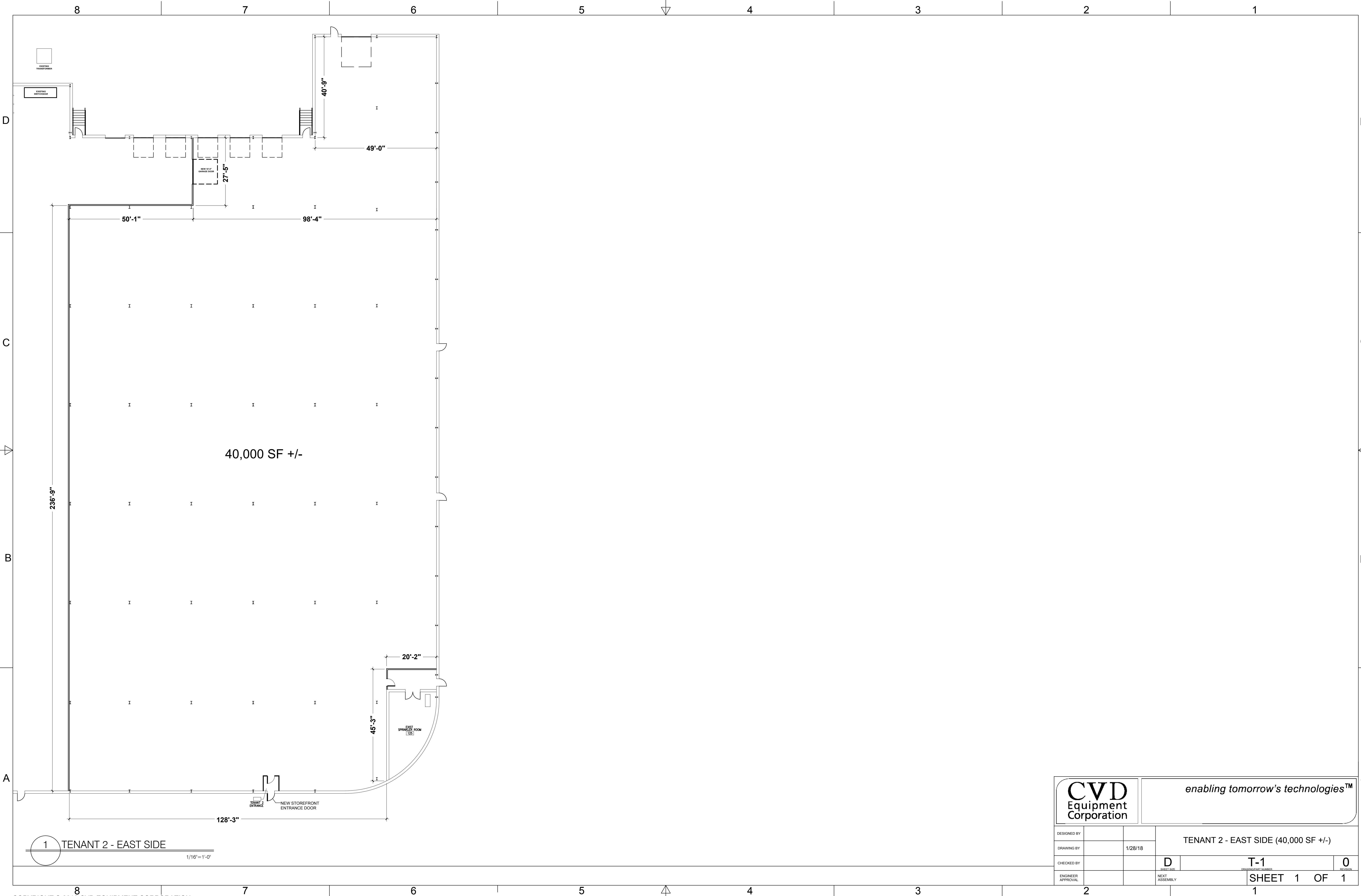
**TOM ATTIVISSIMO, CCIM**

**Direct: (516)833-1401 Cell: (516)606-6161**

**Email: [tomattivissimo@greiner-maltz.com](mailto:tomattivissimo@greiner-maltz.com)**

***Asking Lease Price: \$10.50 psf***

**GREINER-MALTZ COMPANY OF LONG ISLAND, LLC**  
185 EXPRESS STREET, SUITE 300, PLAINVIEW, NY 11803  
T. (516) 364-1000 F. (516) 364-1012  
[WWW.GREINERMALTZ.COM](http://WWW.GREINERMALTZ.COM)



1 TENANT 2 - EAST SIDE  
1/16" = 1'-0"

<b>CVD</b> Equipment Corporation		enabling tomorrow's technologies™		
DESIGNED BY			TENANT 2 - EAST SIDE (40,000 SF +/-)	
DRAWING BY		1/28/18		
CHECKED BY			D	T-1
ENGINEER APPROVAL			NEXT ASSEMBLY	0
SHEET 1 OF 1			1	



